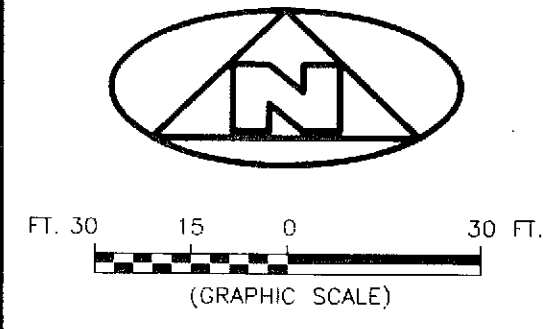
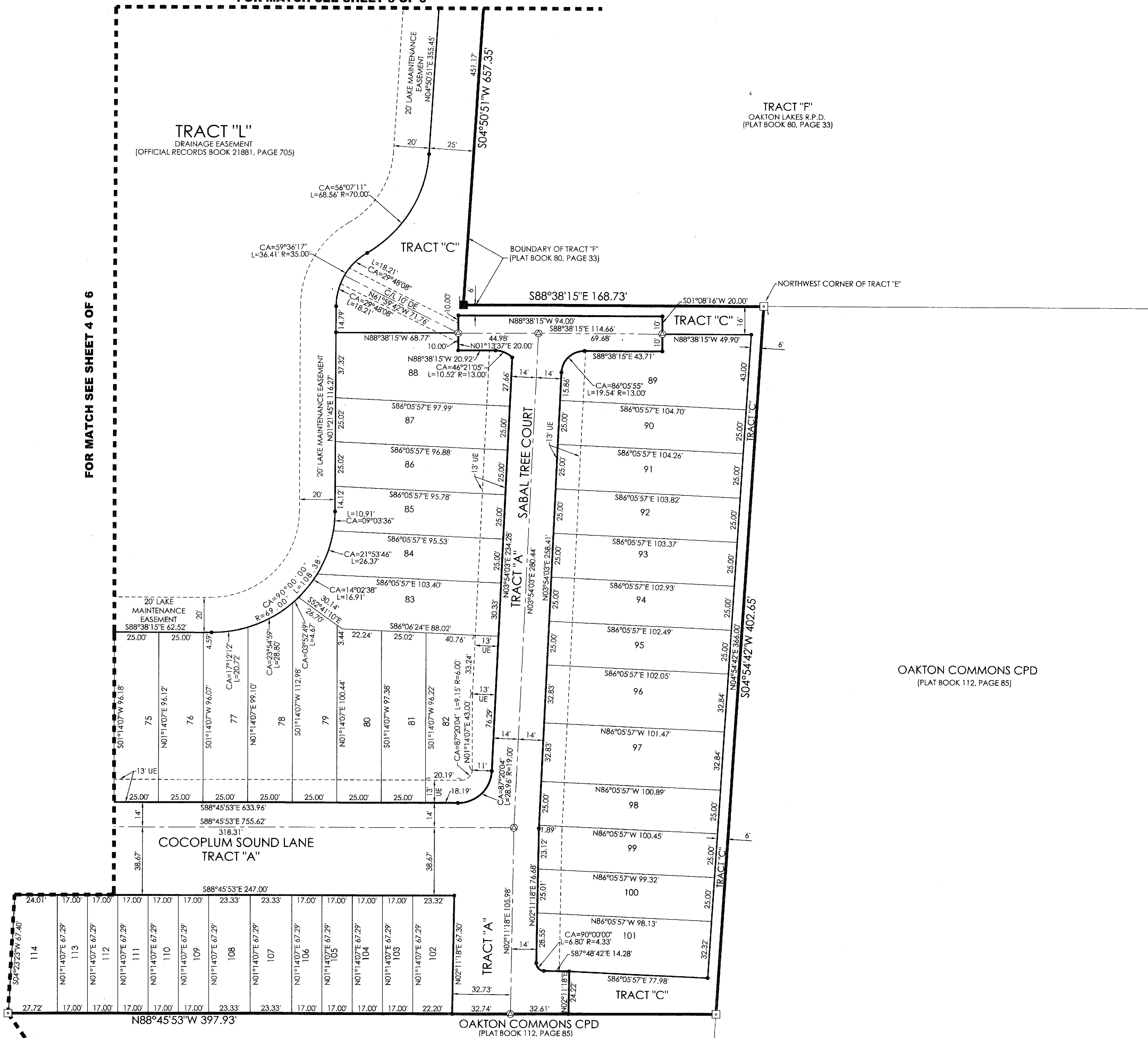


OAKTON PRESERVE

BEING A REPLAT OF TRACT "R", OAKTON COMMONS CPD, RECORDED IN PLAT BOOK 112, PAGE 85, PUBLIC RECORDS, PALM BEACH COUNTY, FLORIDA AND LYING IN SECTION 20, TOWNSHIP 43 SOUTH, RANGE 42 EAST, CITY OF WEST PALM BEACH, PALM BEACH COUNTY, FLORIDA

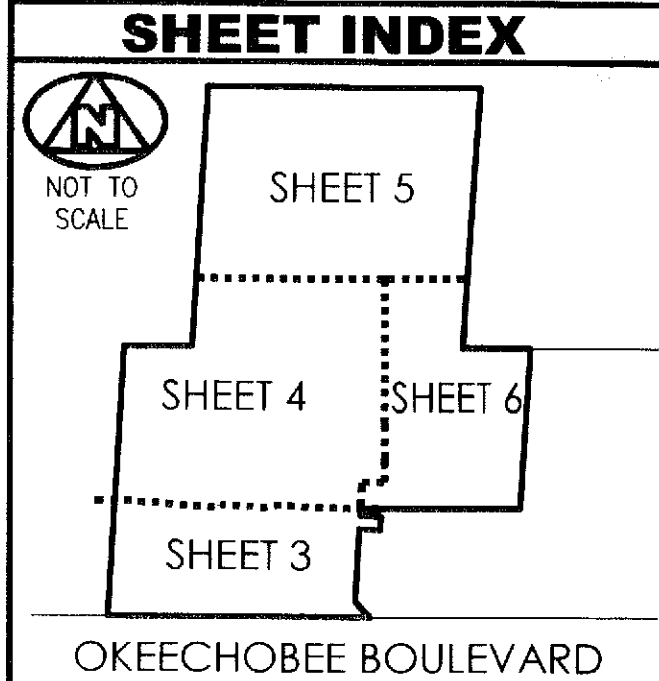


FOR MATCH SEE SHEET 5 OF 6



FOR MATCH SEE SHEET 4 OF 6

OAKTON COMMONS CPD (PLAT BOOK 112, PAGE 85)



LEGEND table with symbols for radial lines, centerlines, easements, monuments, and bearings.

SURVEYOR'S NOTES: 1. THE BEARING BASIS (BASE BEARING)... 2. IN THOSE INSTANCES WHERE UTILITY OR DRAINAGE STRUCTURES ARE CONSTRUCTED... 3. LINES THAT INTERSECT CURVES ARE RADIAL UNLESS OTHERWISE NOTED. 4. THIS INSTRUMENT WAS PREPARED BY STEPHEN L. SHIRLEY...

ASSOCIATED LAND SURVEYORS, INC. logo and contact information. Includes address: 4152 W. BLUE HERON BOULEVARD-SUITE 121, RIVIERA BEACH, FLORIDA 33404.

FILE: Oakton Preserve, SCALE: 1"=30', WO NO.: P226, DWN: KVC, SHEET 6 OF 6